

# EUROMEDEX

## CERTIFICATE OF ANALYSIS

### Lambda DNA/HindIII Marker, 2

#04-01212      1250 (25x 50) µg

Lot      Exp. date:

Concentration: 0.5µg/µl  
Supplied with 10x 1ml 6X DNA Loading  
Dye Solution

Store at -20°C

In total 35 vials

#### Description

Lambda DNA was completely digested with HindIII, purified and dissolved in a storage buffer.

The DNA Marker contains the following 8 discrete fragments (in base pairs): 23130\*, 9416, 6557, 4361\*, 2322, 2027, 564, 125.

#### Storage Buffer

10mM Tris-HCl (pH7.6), 1mM EDTA.

#### 6X DNA Loading Dye Solution

10mM Tris-HCl (pH 7.6), 0.03% bromophenol blue, 0.03% xylene cyanol FF, 60% glycerol and 60mM EDTA.

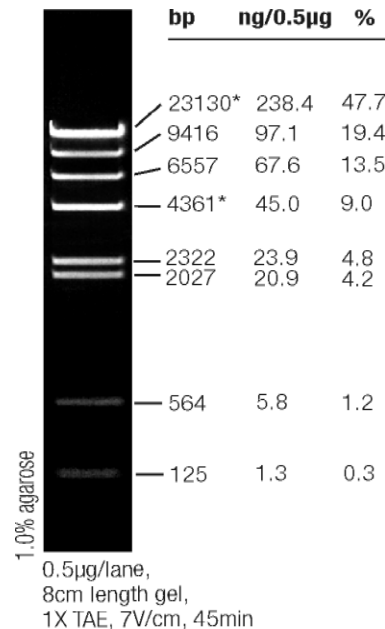
#### Recommendations for Use

- Vortex gently just prior to use.
- Prepare the DNA Marker before loading:  
1µl (0.5µg) of the DNA Marker  
1µl of 6X DNA Loading Dye Solution  
4µl of deionized water
- Heat for 5min at 65°C and then cool on ice for 3min (see Note).
- Apply the prepared amount (6µl) of the DNA Marker on a 5mm lane of agarose gel.
- Following electrophoretic separation on gel, visualize the DNA bands by ethidium bromide staining.

#### Note

- One vial (50µg) is sufficient for ~100 applications.
- Use 0.1µg (0.2µl) of the DNA Marker (before dilution) per 1mm of agarose gel lane width.
- The cohesive ends of the 12nt cos site of bacteriophage lambda from fragments of 23130 bp and 4361 bp (indicated\*) may anneal and form an additional band at 27491bp. These fragments can be separated by heating at 65°C for 5min and then cooling on ice for 3min.

#### Lambda DNA/HindIII Marker, 2



**Quality Control Assay Data**

Agarose gel electrophoretic analysis of homogeneity of HindIII fragmentation patterns.

**Product Use Limitation**

This product is developed, designed and sold exclusively *for research purposes and in vitro use only*. The product was not tested for use in diagnostics or for drug development, nor is it suitable for administration to humans or animals.

**EUROMEDEx**

24, rue des Tuileries BP 684

F-67460 SOUFFELWEYERSHEIM CEDEX

Tél.: 03 88 18 07 22

Fax: 03 88 18 07 25

e-mail: [research@euromedex.com](mailto:research@euromedex.com)

Internet: [www.euromedex.com](http://www.euromedex.com)