



## CERTIFICATE OF ANALYSIS

### 1kb DNA Ladder Plus

**#03B-1411      250 (5x 50) µg**  
(for 500 applications)

**Lot**      Exp. date:

Concentration: 0.5µg/µl

Supplied with 2x 1ml **6X TriDye DNA Loading Solution**

**Store at -20°C.**

*In total 7 vials.*

#### Description

1kb DNA Ladder Plus is designed for the sizing and quantification of DNA fragments in agarose gels. The Ladder is composed of fifteen chromatography-purified individual DNA fragments (in base pairs): 20000, 10000, 7000, **5000**, 4000, 3000, 2000, **1500**, 1000, 700, **500**, 400, 300, 200, and 75. It contains three reference bands (5000, 1500 and 500 bp) for easy orientation.

The Ladder is dissolved in TE buffer.

#### Storage Buffer (TE buffer)

10mM Tris-HCl (pH 7.6), 1mM EDTA.

#### 6X TriDye DNA Loading Solution

10 mM Tris-HCl (pH 7.6), 0.03% bromophenol blue, 0.03% xylene cyanol FF, 0.15% orange G, 60% glycerol and 60 mM EDTA.

#### Protocol for Loading

Loading mixture for the 5 mm agarose gel lane\*:

- DNA Ladder	1µl
- 6X TriDye DNA Loading Solution	1µl
- Deionized water	4µl
Total	6µl

#### Step 1: Mix gently

#### Step 2: Load on the gel

\*For gels with other lane widths, the components of the mixture should be scaled either up or down. Use 0.2µl (0.1µg) of DNA Ladder per 1mm of lane.

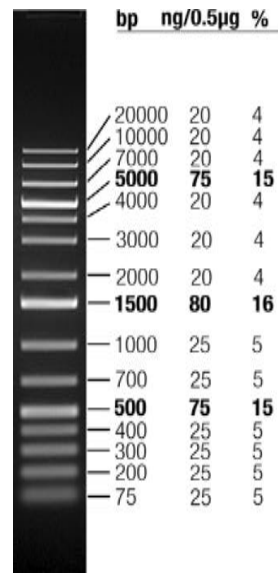
#### Recommendations

- Do not heat before loading.
- Dilute your DNA sample with the 6X TriDye DNA Loading Solution (#10-0611, supplied with the Ladder): mix 1 volume of the dye solution with 5 volumes of the DNA sample.
- Load the same volumes of the DNA sample and the DNA Ladder.
- For quantification, adjust the concentration of the sample to equalize it approximately with the amount of DNA in the nearest band of the Ladder.
- For DNA band visualization with SYBR™ Green and other intercalating dyes, do not add the dyes into the sample, use gel staining after electrophoresis or include dyes into agarose gel

to avoid aberrant DNA migration.

• **Important note:** For DNA bands visualization with GelRed™ use gel staining after electrophoresis to avoid aberrant DNA migration.

## 1kb DNA Ladder Plus



1% TopVision™ LE GQ Agarose (#R0491),  
0.5µg/lane, 8cm length gel, 1X TAE, 7V/cm, 45min

**Note.** Formation of diffused bands of small DNA fragments is a feature of agarose gel electrophoresis.

### Quality Control Assay Data

Well-defined bands are formed during agarose gel electrophoresis. The absence of nucleases is confirmed by a direct nuclease activity assay

### Product Use Limitation.

This product is developed, designed and sold exclusively *for research purposes and in vitro use only*. The product was not tested for use in diagnostics or for drug development, nor is it suitable for administration to humans or animals.

## EUROMEDEx

24, rue des Tuileries BP 684  
F-67460 SOUFFELWEYERSHEIM CEDEX

Tél.: 03 88 18 07 22

Fax: 03 88 18 07 25

e-mail: [research@euromedex.com](mailto:research@euromedex.com)

Internet: [www.euromedex.com](http://www.euromedex.com)