

EUROMEDEX

CERTIFICATE OF ANALYSIS

Mass DNA Ladder Mix

Ready-to-use

#02B-1313 **2x 500 µl**

(for 50-200 applications)

Lot Exp. date:

Concentration: 103 ng/µl

Supplied with 1ml **6X Mass DNA Loading Dye Solution**

Store at room temperature (or at +4°C for periods up to 6 months. For longer periods store at -20°C).

In total 3 vials.

Description

Mass DNA Ladder, Mix, is designed for the fast and accurate quantification and sizing of DNA fragments on agarose gels.

The DNA Ladder contains the following 20 discrete fragments (in base pairs): 10000, 8000, 6000, 5000, 4000, 3000, 2500, 2000, 1500, 1031, 900, 800, 700, 600, 500, 400, 300, 200, 100, 80.

The Ladder is ready-to-use .It is premixed with Mass Loading Dye Solution and can be directly applied onto an agarose gel.

Storage and Loading Buffer

10mM Tris-HCl (pH 7.6), 10mM EDTA, 0.005% bromophenol blue and 10% glycerol.

6X Mass DNA Loading Dye Solution

10mM Tris-HCl (pH 7.6), 0.03% bromophenol blue, 60% glycerol and 60mM EDTA.

Quality Control Assay Data

Well-defined bands are formed during agarose gel electrophoresis. The DNA concentration is determined spectrophotometrically. The absence of nucleases is confirmed by a direct nuclease activity assay.

Protocol for Loading

Step 1: Mix gently

Step 2: Load 5-20µl per 1mm gel lane.

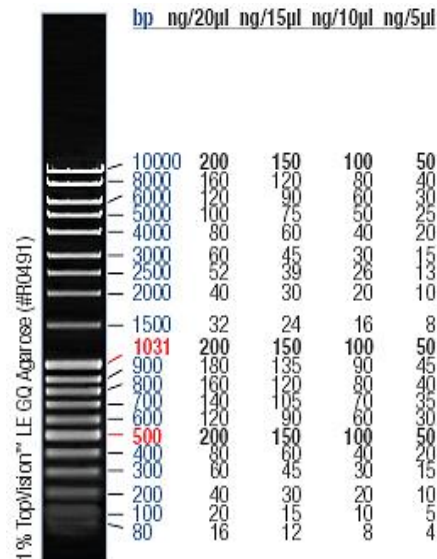
Recommendations

- Do not heat before loading.
- For accurate DNA quantification:
 - Load the same volumes of the DNA sample and the DNA Ladder;
 - Adjust the concentration of the sample such that the expected amount of DNA loaded is approximately equal to that of Ladder's band of a nearest size.
- Visualize DNA by staining with ethidium bromide or with SYBR® Green I.

Note

The apparent intensity of bands containing equal ng quantities of DNA may differ in different horizontal sections of gel (diminishes from top to bottom). This effect derives from higher diffusion rates of the shorter fragments, leads resulting in the lower compactness and lower peak intensity of the corresponding bands. Among factors effecting the severity of this effect are: temperature (the lower the better), overall duration of an electrophoretic and staining procedure (lower), percentage of gel (higher).

Mass DNA Ladder Mix, ready-to-use



10µl/lane, 8cm length gel,
1X TAE, 7V/cm, 45min

Product Use Limitation.

This product is developed, designed and sold exclusively *for research purposes and in vitro use only*. The product was not tested for use in diagnostics or for drug development, nor is it suitable for administration to humans or animals.

EUROMEDEX

24, rue des Tuileries BP 684

F-67460 SOUFFELWEYERSHEIM CEDEX

Tél.: 03 88 18 07 22

Fax: 03 88 18 07 25

e-mail: research@euromedex.com

Internet: www.euromedex.com